

4044 - 4068 GLOBE AVE - CULVER CITY, CA 90230

10 UNIT CONDO DEVELOPMENT - TRACT MAP NO.

LEGAL DESCRIPTION:

TRACT 8895, 6936 - LAND DESC IN DOC 1568032 20050701 POR OF LOTS 469, 470, 71, 72, 73, 74, 75
 IN THE CITY OF CULVER CITY, COUNTY OF LOS ANGELES, STATE OF CALIFORNIA,
 AINs: 4233-033-901,902,903,904,905,906,907



PLAN A

3 BEDROOM - 2.5 BATHROOM

FIRST FLOOR	527 SQ FT
SECOND FLOOR	826 SQ FT
TOTAL	1,353 SQ FT



PLAN B

3 BEDROOM - 2 BATHROOM

FIRST FLOOR	682 SQ FT
SECOND FLOOR	624 SQ FT
TOTAL	1,306 SQ FT



PLAN C-1

3 BEDROOM - 2 BATHROOM

FIRST FLOOR	681 SQ FT
SECOND FLOOR	623 SQ FT
TOTAL	1,304 SQ FT



PLAN C-2

3 BEDROOM - 2 BATHROOM

FIRST FLOOR	681 SQ FT
SECOND FLOOR	623 SQ FT
TOTAL	1,304 SQ FT

SHEET INDEX

A-00:	COVER SHEET
	SURVEY
	TRACT MAP
A-100:	SITE PLAN
A-101:	GRADING PLAN
A-01/02:	FLOOR PLAN A
A-03:	FLOOR PLAN B
A-04:	FLOOR PLAN C-1,2
A-05:	FLOOR PLAN C-2 HC ACCESS
A-06/07:	ELEVATION PLAN A
A-08:	ELEVATION PLAN B
A-09:	ELEVATION PLAN C-1
A-10:	ELEVATION PLAN C-2
A-11:	ELEVATION PLAN C-2 HC
A-12:	ROOF PLAN A
A-13:	ROOF PLAN B
A-14:	ROOF PLAN C-1,2
A-15:	ROOF PLAN C-2 HC ACCESS
A-16:	SECTIONS PLAN A
A-17:	MATERIALS AND COLORS
L-1	LANDSCAPE PLAN
L-2	PLANTS

ZONING INFORMATION

- ZONE:	R-2
- LOT SIZES:	SEE A-100
- BUILDING FOOT PRINT:	SEE A-100
- LOT COVERAGE:	SEE A-100
- BUILDING HEIGHT:	20 - 21 ft
- PARKING SPACES:	20

CODE INFORMATION

- OCCUPANCY GROUP:	R-3/U
- CONSTRUCTION TYPE:	V-B

- CODES:
 2013 CALIFORNIA RESIDENTIAL CODE
 2013 CALIFORNIA PLUMBING CODE
 2013 CALIFORNIA MECHANICAL CODE
 2013 LOS ANGELES COUNTY FIRE CODE
 2013 CALIFORNIA ELECTRICAL CODE
 2013 CALIFORNIA GREEN BUILDING STANDARDS CODE
 CULVER CITY MUNICIPAL CODE

Design/Build by:



8739 Artesia Blvd
 Bellflower, CA 90706
 Phone: (310) 821-7631
 www.habitatla.org

Robert Dwelle, PE
 rdwelle@habitatla.org



NOT FOR CONSTRUCTION

Job:

Habitat for Humanity
Globe Ave Affordable Housing
4044-4068 Globe Ave
Culver City, CA 90230

Consultants:

Survey/Mapping:
 RD Engineering
 Contact: Ralph Dartt
 3635 Shadow Grove Rd
 Pasadena, CA 91107
 (626) 288-7911

Structural:
 Tibba Engineering
 Contact: Mark Ibrahim
 3436 E Longridge Dr
 Orange, CA 92867
 (714) 553-2595

MEP:
 G MEP
 Contact: Bruce Entezam
 3 MacArthur Place 8th floor
 Santa Ana, CA 92707
 (949)-232-1919

Soils:
 Norcal Engineering
 Contact: Scott Spensiero
 10641 Humbolt Street
 Los Alamitos, CA 90720
 (562) 799-9469

Date:

JANUARY 20, 2016

Scale:

Sheet Title:

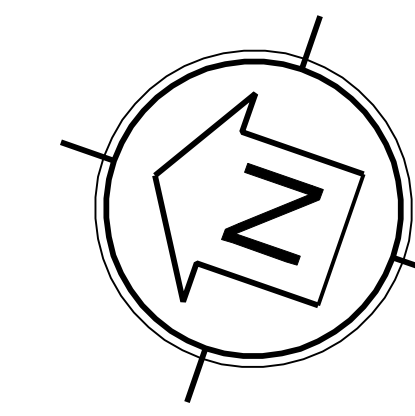
COVER

Sheet No.:

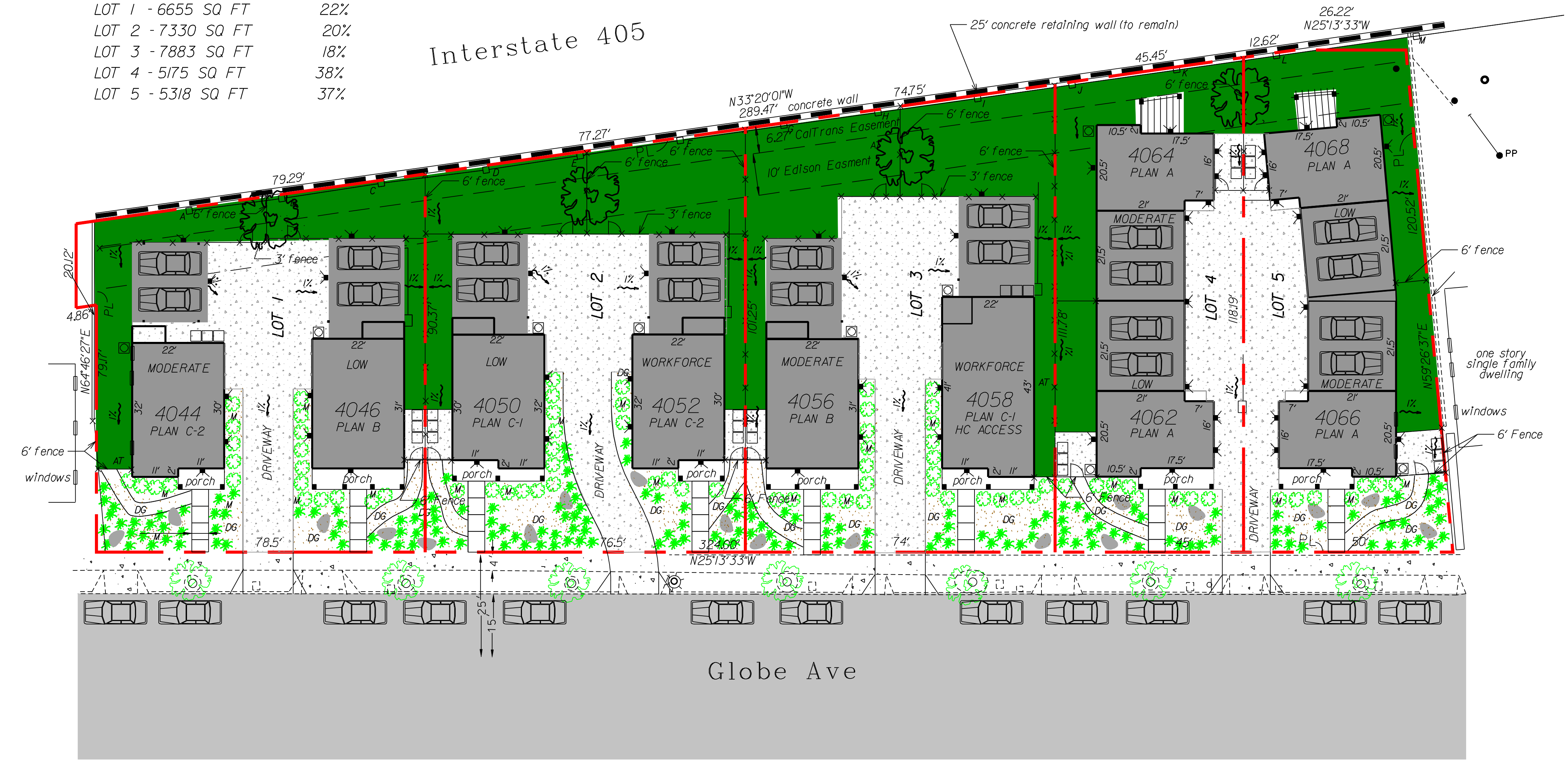
A-00

Revisions:

No	Description	Date



LOT AREAS	PERCENT COVERAGE
LOT 1 - 6655 SQ FT	22%
LOT 2 - 7330 SQ FT	20%
LOT 3 - 7883 SQ FT	18%
LOT 4 - 5175 SQ FT	38%
LOT 5 - 5318 SQ FT	37%



Design/Build by:



8739 Artesia Blvd
 Bellflower, CA 90706
 (310) 323-4663
 www.habitatla.org

Robert Dwelle, PE
 rdwelle@habitatla.org
 310-821-7631

Job:

HABITAT FOR HUMANITY
 GLOBE AVE
 AFFORDABLE HOUSING

4044-4068 GLOBE AVE
 CULVER CITY, CA 90230

Revisions:

No.	Description	Date

Date:

JANUARY 20, 2016

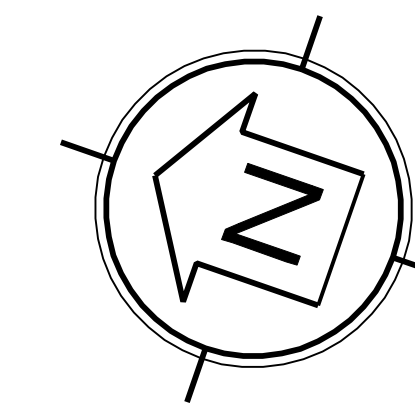
Scale:

1" = 16'

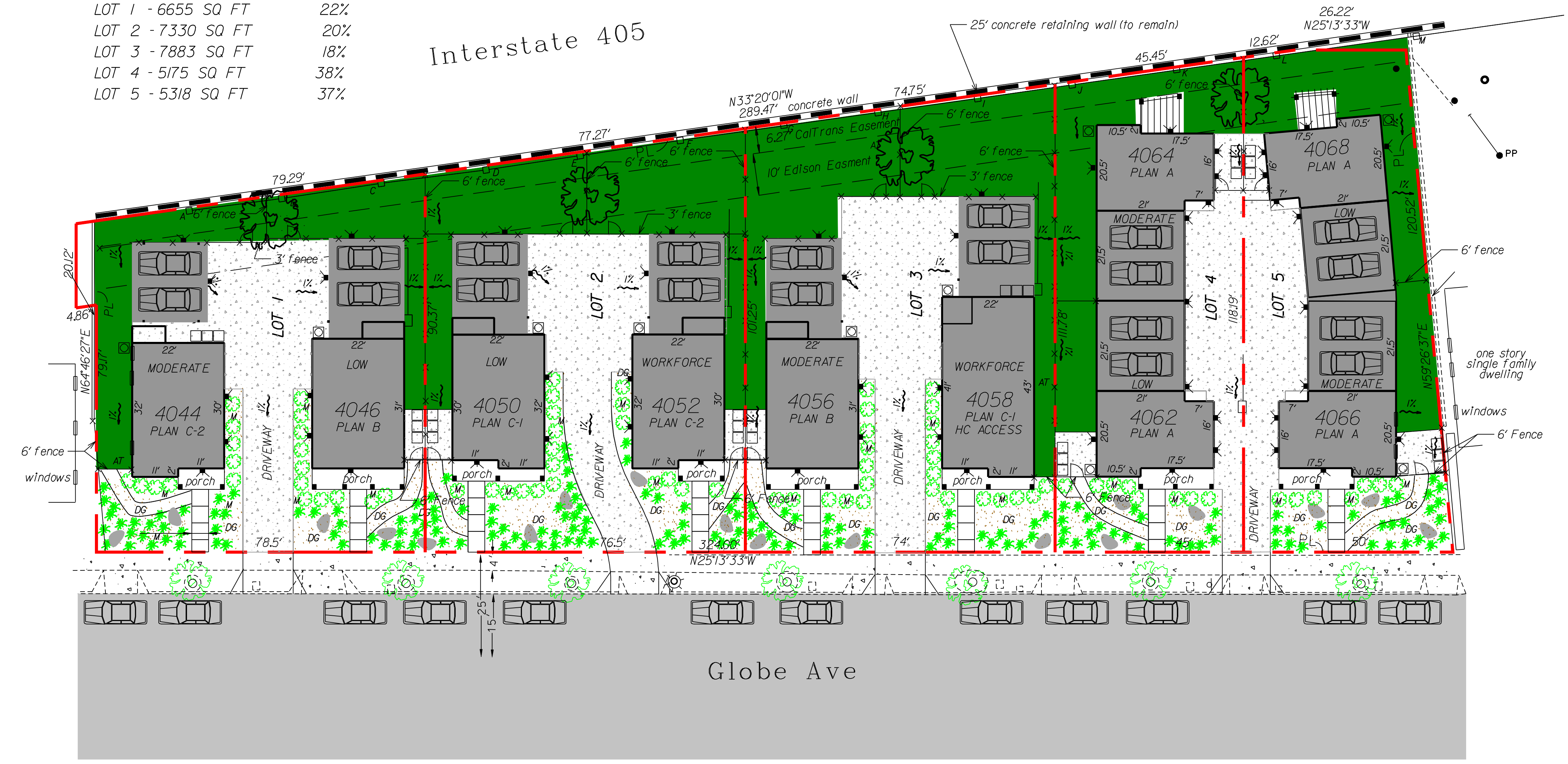
Sheet Title:

Site Plan

Sheet No.:



LOT AREAS	PERCENT COVERAGE
LOT 1 - 6655 SQ FT	22%
LOT 2 - 7330 SQ FT	20%
LOT 3 - 7883 SQ FT	18%
LOT 4 - 5175 SQ FT	38%
LOT 5 - 5318 SQ FT	37%



Design/Build by:



8739 Artesia Blvd
 Bellflower, CA 90706
 (310) 323-4663
 www.habitatla.org

Robert Dwelle, PE
 rdwelle@habitatla.org
 310-821-7631

Job:

HABITAT FOR HUMANITY
 GLOBE AVE
 AFFORDABLE HOUSING

4044-4068 GLOBE AVE
 CULVER CITY, CA 90230

Revisions:

No.	Description	Date

Date:

JANUARY 20, 2016

Scale:

1" = 16'

Sheet Title:

Site Plan

Sheet No.: